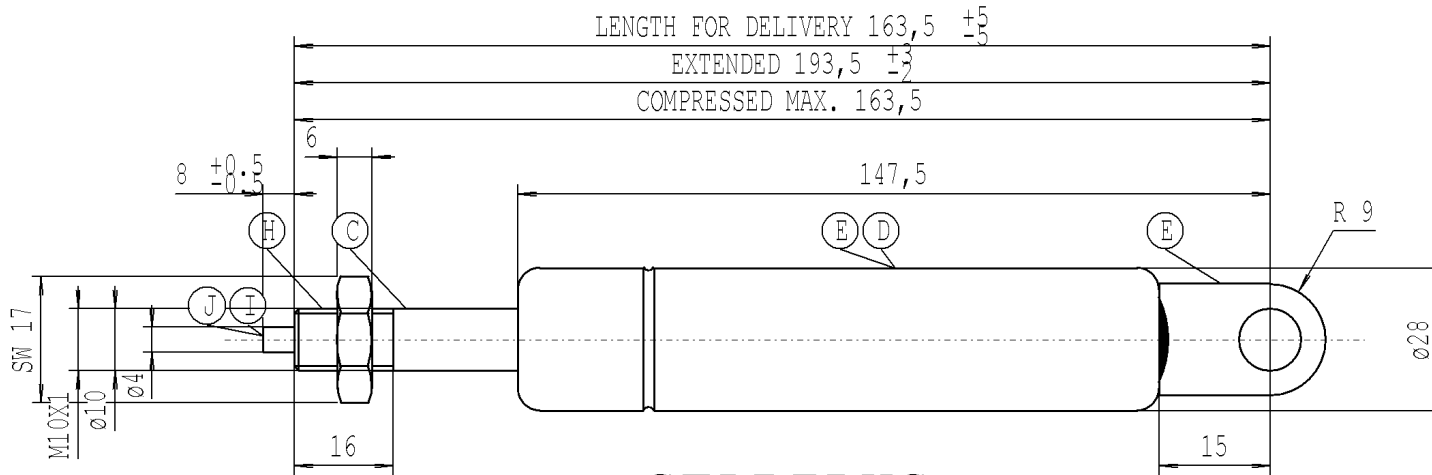


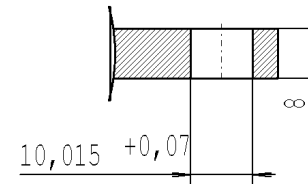
We reserve all rights to this drawing, to any patents or patent registrations related hereto, and to the duplication, retransmission by third parties and misc. use. Any use of this drawing is not permitted without the written consent of STABILUS.

Intended for internal use and customer

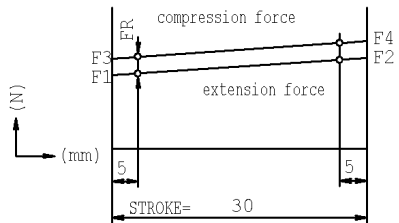


### STABILUS BLOC-O-LIFT

NICHT OEFFNEN HOHER DRUCK  
DO NOT OPEN HIGH PRESSURE  
STABILUS Standard Logo



- the Gas Spring must not be mechanically modified or damaged.
- The warning label must not be removed or obscured.
- compression and extension forces measured acc. to STAB-Spec. 10009033
- Spring test with piston rod downwards
- Protect piston rod from dirt, paint and damage
- Disposal acc. to STAB-Spec.10009375
- Drawing not true-to-scale
- Locking force at +20° C  
in extension 1500 N  
in compression 12000 N
- release-force of valve acc. to STAB-Spec. 10005233
- Observe installation instructions according to STAB-Spec. 10005593
- Permissible operating temperature range -30°C to +80°C
- Installation: Preferably with piston rod down
- Release of locking: actuate release lever
- Locking: fully release trip lever
- Press release max. 6.0 mm



$FR_{max} = F3 - F1$

$X = F2 / F1 = 1,15$   
Nozzle Ø0.9

Forces (statically measured)

F1 (N)	F4 max (N)	FR max (N)
extension force 400 ±40	compression force 600	friction 80

- C| Nislide black
- D| print white
- E| black painted
- H| max. tightening torque: 25 Nm
- I| Shearing burr max. 0.2 mm
- J| bonderized

CHANGE	NEW	ÜBERARBEITUNG	ÜBERARBEITUNG
	OLD	-	-
	CHG.NO.	626378	628671
	NAME	8.9.15 SCHÄFER	23.9.15 SCHÄFER
	NO.	6	7

DIMENSIONS WITH-  
OUT TOLERANCE

+/-1

### BLOC-O-LIFT

06 32 1024 20 030

**Unregistered Copy**  
Print-out is not subject to the modification service

## STABILUS

Modifications in favour of technical process reserved

DRAWING	CHECKED
DATE 25.3.1994	NAME SCHNITZIUS
Document No. 10005522	

787767

E