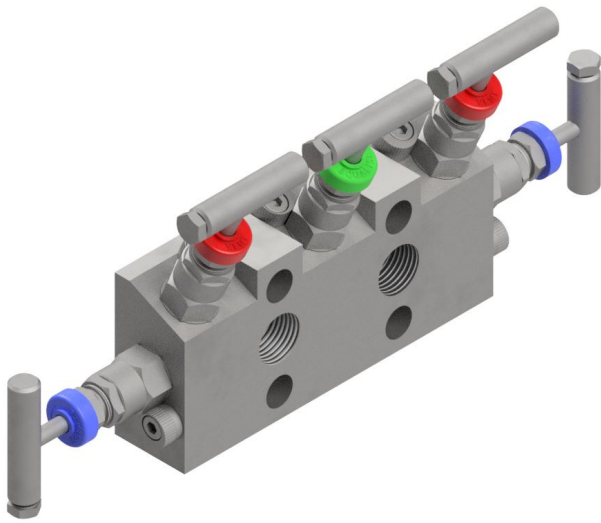


'5VBD' SERIES NEEDLE MANIFOLD



Direct Mounted 5 Valve Needle Manifold 6,000 PSI

Direct style block mounted 5 valve manifold, instrument mount to pipe connection. Offering two isolation valves, two vent valves and one equalising valve (see attached drawing). Used in differential pressure transmitters and static instrument applications. Standard 2 x 1/2" inlet x 2 x 1/2" outlet all on 54mm instrument centres with 2 x 1/4" vent port. Incorporating all the standard long service life features of the standard 'N' series needle valve, multi-ring piston style packing, back sealing facility. Mounting holes supplied as standard for wall or bracket mounting.

DESIGN FEATURES

<ul style="list-style-type: none">• All valves have 2-piece non-rotating hardened (17-4PH) tips as standard.	<ul style="list-style-type: none">• Temperature range -40°C to 230°C (427°C with GP option)
<ul style="list-style-type: none">• Positive no slack stem action.	<ul style="list-style-type: none">• Available in 316ss, Monel, Duplex, and other exotic materials.
<ul style="list-style-type: none">• Bubble tight shut off.	<ul style="list-style-type: none">• 54mm (2 1/8") instrument centres.
<ul style="list-style-type: none">• Supplied with bolt pack and PTFE seals as standard.	<ul style="list-style-type: none">• Full material traceability.
<ul style="list-style-type: none">• Metal to metal body bonnet seal for high pressure and high temperature use.	<ul style="list-style-type: none">• Two valve configurations available (oil and gas).
<ul style="list-style-type: none">• Unique bonnet locking cam.	<ul style="list-style-type: none">• Repair / service kit available to extend field life further.
<ul style="list-style-type: none">• Base mounting holes to allow fixing to enclosure or mounting boss.	<ul style="list-style-type: none">• Materials of construction can be supplied to meet the requirements of NACE MR 0175.

