

Cookies help us to provide our services. By using these services, you accept our use of cookies. [Info](#)

[←](#) BACK

CODE 17009

VORTICE LINEO 250 V0

In-line mixed flow fans

- [Description](#)
- [Certifications](#)
- [Technical Data Sheet](#)
- [Accessories](#)

DOCUMENTATION

1

1 2 3 4

[other images](#) [m](#)



[PRODUCTS](#) > [COMMERCIAL VENTILATION](#) > [MIXED FLOW FANS](#) > [IN-LINE](#)

Description

- Material: self-extinguishing plastic resin (self-extinguishing capability V0)
- Nominal diameter 250 mm.
- 2 speed AC motor with thermal overload cutout and shaft turning in ball bearings, coupled to mixed flow axial-centrifugal impeller.
- Minimum air flow 990 m³/h
Maximum air flow: 1350 m³/h
- IMQ SAFETY and IMQ PERFORMANCE certifications
- Vortice speed controllers.

[Read full description](#)

Certifications



IMQ



CE



IMQ Performance



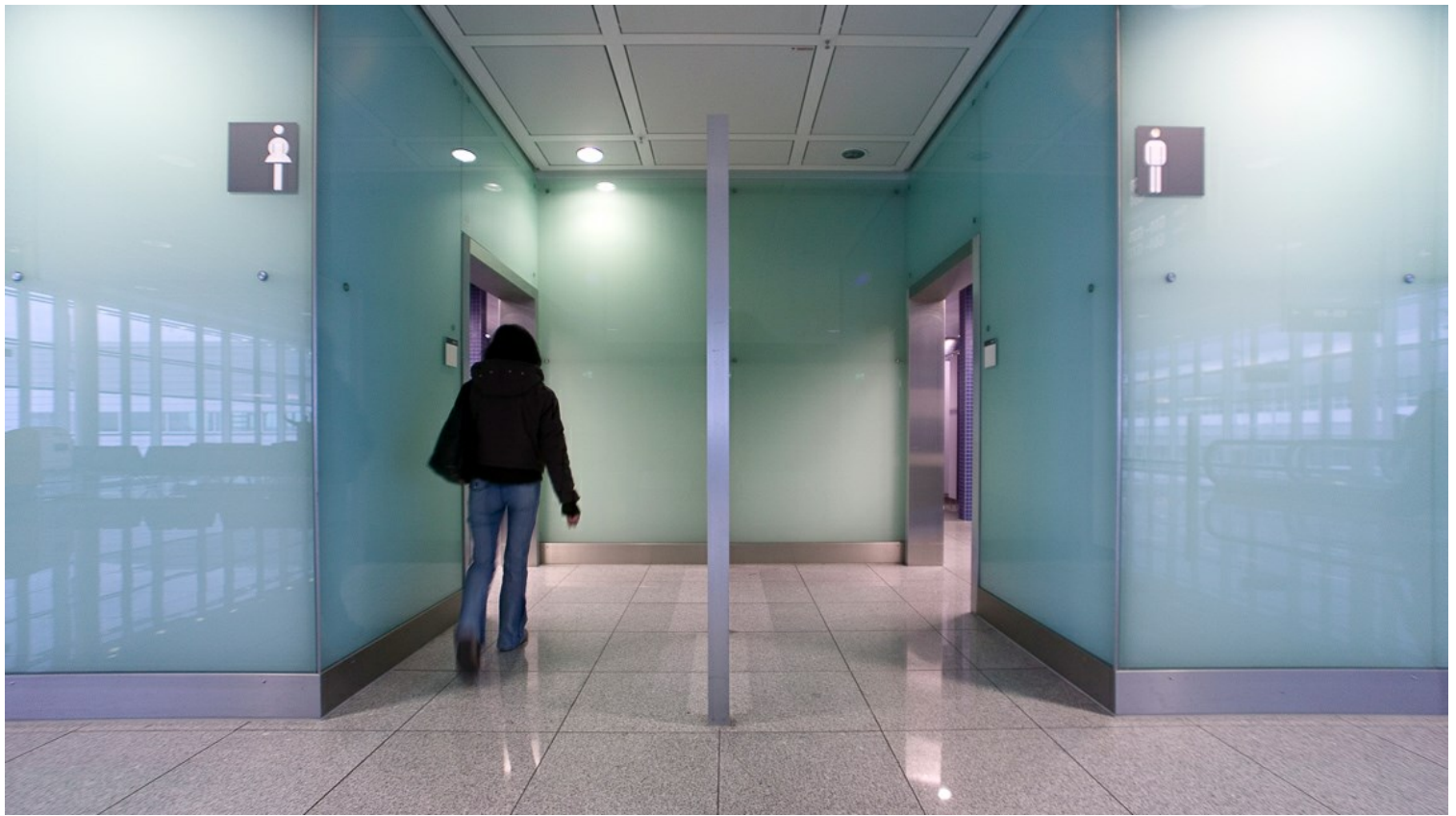
C Tick Mark



CCC



EAC



Technical Data Sheet

Technical and performance data Dimensions Curves

Absorbed power 1st speed (W)	110	Delivery 1st speed (l/s)	275
Absorbed Power max (W)	180	Delivery 1st speed (m ³ /h)	990
Frequency (Hz)	50	Max delivery at max speed (l/s)	375
Insulation Class	II°	Max delivery at max speed (m ³ /h)	1350
IP	44	Pressure - 1st speed (mmH2O)	36
Max ambient temperature for continuous operation (°C)	60	Pressure - 1st speed (Pa)	353,2
Max. absorbed Current at max. speed (A)	0,78	Pressure max - max speed (mmH2O)	53
Max. absorbed Current at min. speed (A)	0,48	Pressure max - max speed (Pa)	519,9
Max. absorbed power at max speed (W)	180	RPM max	2550
Voltage (V)	220-240	RPM min	1900
Weight (Kg)	7	Sound pressure level Lp [dB (A)] 3m - max speed	59,1
		Sound pressure level Lp [dB (A)] 3m - min speed	51,4

Interested?

If you are interested in this product, contact us or locate your nearest Vortice dealer.

[CONTACT US](#)

Documentation

You can see all the documentation relating to this product: price list, information booklet and wiring diagram.

[DOCUMENTATION](#)

»

Accessories

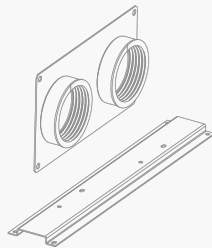
Discover accessories related to the product



IN-LINE-S 250

• **Galvanized sheet-metal backdraught shutter with aluminium fins and return springs to prevent air back-draughts or penetration of rain when the unit is turned off.**

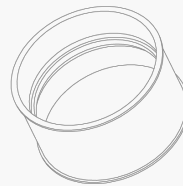
[Go to data sheet](#) **d**



LINEO-PF 250

• **Kit for parallel application.**

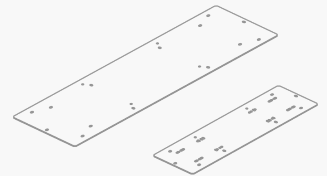
[Go to data sheet](#) **d**



LINEO-C 250

• **Coupling for series application.**

[Go to data sheet](#) **d**



LINEO-SF 700

• **Bracket for series application.**

[Go to data sheet](#) **d**

[Find distributor](#)

d

[Register for the Newsletter](#)

d

[Contact us](#)

d

Select country:

[International](#) [Italy](#) [United Kingdom](#) [France](#) [China](#) [Latam](#)
