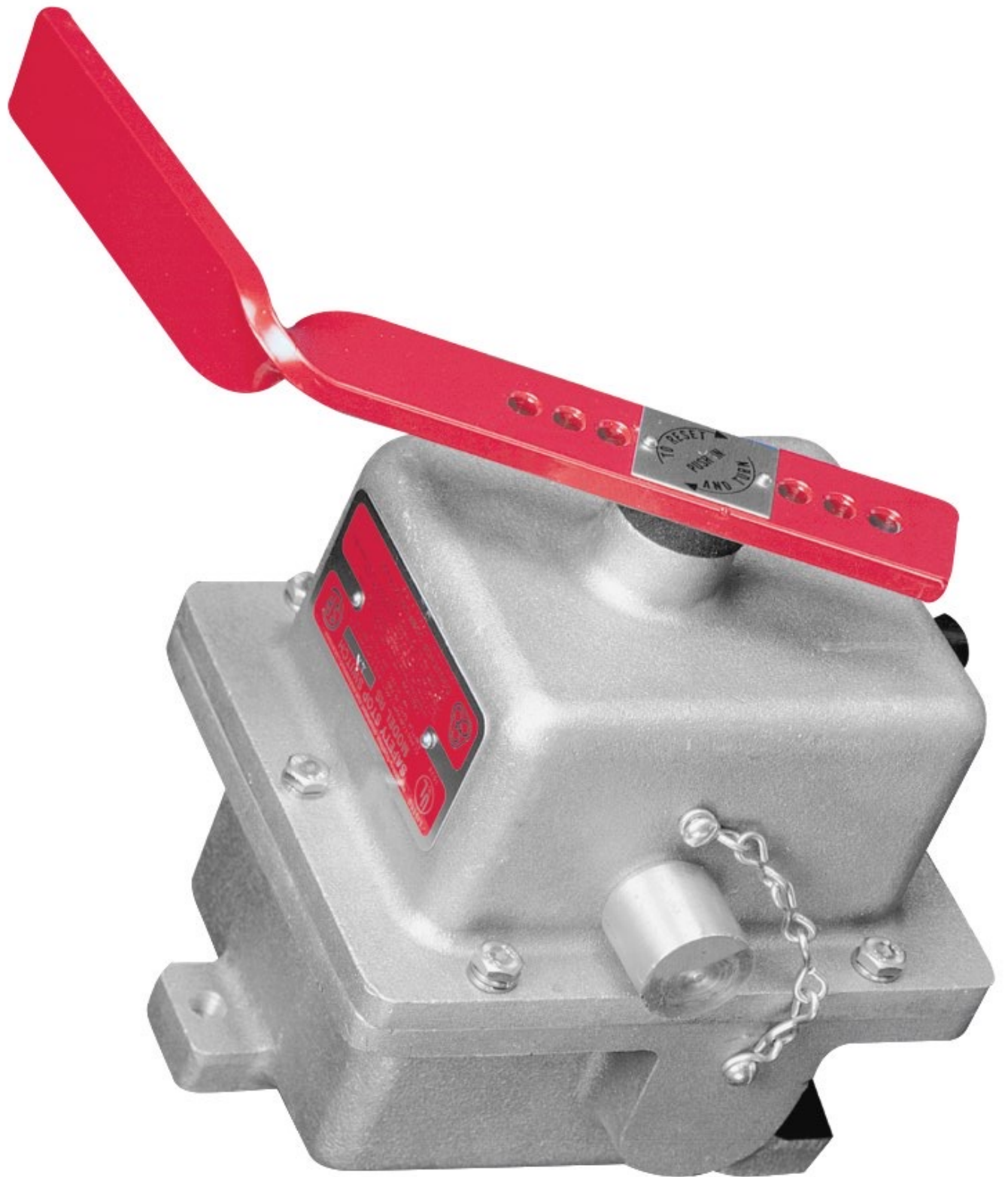


**Instrument Data Sheet**

General	1	Product	Safety Stop Switch / Pull Cord Switch with Signal Light
	2	Model Number	RS-2L
	3	Manufacturer	Conveyor Components Company
	4		
Environment	5	Certified Ambient Temperature Rating	40 °C [104 °F]
	6	Functional Ambient Temperature	-50 to 40 °C [-58 to 104 °F] (increased actuation force may be required below -30 °C [-22 °F])
	7	Enclosure Material	319 cast aluminum
	8	Enclosure Rating (UL)	NEMA Type 1, 3, 3R, 4, 4X
	9	Enclosure Rating (CSA)	NEMA Type 3, 4, 4X
	10	Mounting	3 holes at $\varnothing^{13/32}$ " [10 mm] (Vertical surface mounting standard, bracket available for horizontal surfaces)
	11		
Switch	12	Switch Type	SPDT x 2
	13	Contact Type	Dry contact
	14	Contact Rating (UL)	20A @ 125V, 250V or 480V AC; 1 hp @ 125V AC; 2 hp @ 250V AC
	15	Contact Rating (CSA)	20A @ 125V, 250V or 480V AC; 1 hp @ 125V AC; 2 hp @ 250V AC; ½ A @ 125V DC; ¼ A @ 250V DC
	16	Electrical Action	Latching (via actuator)
	17	Electrical Connection	¾" NPT x 3
	18	Indicating Lamp	6W 120V 6S incandescent dual-contact bayonet (LED optional)
	19		
Actuator	20	Type	Pull cord switch
	21	Cable Length	Maximum 100' [30.5 m] on each side of the unit (maximum 200' [61 m] total)
	22	Cable Material	$\varnothing^{3/32}$ " [2 mm] 7x7 galvanized aircraft cable: orange vinyl or nylon coated to $\varnothing^{3/16}$ " [5 mm] OD
	23	Mechanism	Lever with rotating cam
	24	Non-activated Position	Rotated fully clockwise
	25	Activated Position	Rotated fully counter-clockwise
	26	Range of Travel	60° counter-clockwise from non-activated position
	27	Action	Latching (To reset, push lever inward and rotate clockwise)
	28	Actuation Force	Field adjustable
29			
Options	30	Finish	Uncoated (standard) or epoxy coating (option E)
	31	Indicating Lamp	6W 120V incandescent (standard) or 120V LED (optional)
Accessories	32	Safety Cable	Orange vinyl (RS-25) or nylon (RS-26) coated cable available
	33	Cable Support Eye Bolt	RS-27: 1" eye X 6" [150 mm] long, two nuts and lockwasher included
	34	Cable End Fitting	RS-28
	35	Conduit Plug	RS 29: ¾" metal conduit plug; square head
	36	Mounting Bracket	RS-30 available for horizontal surface mount
Certifications	37	UL Certification File	NMFT.E83971
	38	CSA Certification File	71174
	39		
Manufacturer	40		Conveyor Components Company Division of Material Control, Inc. 130 Seltzer Road, PO Box 167 Croswell, MI 48422 USA (810) 679-4211 info@conveyorcomponents.com www.conveyorcomponents.com
Notes: 1. Cable must be supported with eyebolts. Maximum spacing: 10' [3 m]. 2. Maximum of 100' [30.5 m] of cable may be attached to each side of the unit; 200' [61 m] total.			





RAINTIGHT ENCLOSURE  
SAFETY STOP CONTROL



ENC. 3,4,4X  
LR 52616

MODEL RS 2L DATE 11-09

ENCLOSURE: NEMA TYPE 3, 3R, 4, & 4X.  
SWITCH: SPDT-20 AMP, 125, 250 OR  
480 VAC-1HP, 125 VAC; 2 HP, 250VAC  
INDUSTRIAL CONTROL EQUIPMENT  
LAMP RATED 6 W. @ 125 VAC



**CONVEYOR COMPONENTS, CO.**  
130 SELTZER ROAD  
CROSWELL, MI 48422

20170052 B01700SrevG